

**Drums** - In drum sheet music the various drum elements are represented by a rounded note. Each note position corresponds to a specific drum set element.



**Cymbals** - In drum sheet music cymbals and hi-hat are represented by a x-shaped note. Each note position corresponds to a specific cymbal type.



# Rock

## POP ROCK

Musical notation for Pop Rock in 4/4 time. The top staff shows a drum pattern with four measures of eighth notes on the snare and cymbal. The bottom staff shows a bass line with quarter notes: G2, A2, B2, C3.

## BLUES ROCK

Musical notation for Blues Rock in 4/4 time. The top staff shows a drum pattern with four measures of eighth notes on the snare and cymbal. The bottom staff shows a bass line with quarter notes: G2, A2, B2, C3, with a slash and a quarter note in the second measure.

## ROCK'N ROLL

Musical notation for Rock'n Roll in 4/4 time. The top staff shows a drum pattern with four measures of eighth notes on the snare and cymbal, including triplet markings. The bottom staff shows a bass line with quarter notes: G2, A2, B2, C3, with triplet markings and a slash in the second measure.

## TWIST

Musical notation for Twist in 4/4 time. The top staff shows a drum pattern with four measures of eighth notes on the snare and cymbal. The bottom staff shows a bass line with quarter notes: G2, A2, B2, C3.

## FOLK ROCK

Musical notation for Folk Rock in 4/4 time. The top staff shows a drum pattern with four measures of eighth notes on the snare and cymbal. The bottom staff shows a bass line with quarter notes: G2, A2, B2, C3, with a slash in the fourth measure.

## COUNTRY ROCK

Musical notation for Country Rock in 4/4 time. The top staff shows a drum pattern with four measures of eighth notes on the snare and cymbal. The bottom staff shows a bass line with quarter notes: G2, A2, B2, C3.

## HARD ROCK

Musical notation for Hard Rock in 4/4 time. The top staff shows a drum pattern with four measures of eighth notes on the snare and cymbal, with circled 'x' marks. The bottom staff shows a bass line with quarter notes: G2, A2, B2, C3.

## HEAVY METAL

Musical notation for Heavy Metal in 4/4 time. The top staff shows a drum pattern with four measures of eighth notes on the snare and cymbal, with circled 'x' marks. The bottom staff shows a bass line with quarter notes: G2, A2, B2, C3.

## MOTOWN ROCK

Musical notation for Motown Rock in 4/4 time. The top staff shows a drum pattern with four measures of eighth notes on the snare and cymbal. The bottom staff shows a bass line with quarter notes: G2, A2, B2, C3.

# Shuffle

## OLD SHUFFLE

Musical notation for Old Shuffle in 4/4 time. The top staff shows a drum pattern with four groups of eighth notes, each marked with a '3' and a bracket, indicating a triplet. The bottom staff shows a bass line with four groups of eighth notes, each marked with a '3' and a bracket, indicating a triplet.

## BLUES SHUFFLE 1

Musical notation for Blues Shuffle 1 in 4/4 time. The top staff shows a drum pattern with four groups of eighth notes, each marked with a '3' and a bracket, indicating a triplet. The bottom staff shows a bass line with four groups of eighth notes, each marked with a '3' and a bracket, indicating a triplet.

## BLUES SHUFFLE 2

Musical notation for Blues Shuffle 2 in 4/4 time. The top staff shows a drum pattern with four groups of eighth notes, each marked with a '3' and a bracket, indicating a triplet. The bottom staff shows a bass line with four groups of eighth notes, each marked with a '3' and a bracket, indicating a triplet.

## R & B SHUFFLE 1

Musical notation for R & B Shuffle 1 in 4/4 time. The top staff shows a drum pattern with four groups of eighth notes, each marked with a '3' and a bracket, indicating a triplet. The bottom staff shows a bass line with four groups of eighth notes, each marked with a '3' and a bracket, indicating a triplet.

## R & B SHUFFLE 2

Musical notation for R & B Shuffle 2 in 4/4 time. The top staff shows a drum pattern with four groups of eighth notes, each marked with a '3' and a bracket, indicating a triplet. The bottom staff shows a bass line with four groups of eighth notes, each marked with a '3' and a bracket, indicating a triplet.

## ROCK SHUFFLE 1

Musical notation for Rock Shuffle 1 in 4/4 time. The top staff shows a drum pattern with four groups of eighth notes, each marked with a '3' and a bracket, indicating a triplet. The bottom staff shows a bass line with four groups of eighth notes, each marked with a '3' and a bracket, indicating a triplet.

## ROCK SHUFFLE 2

Musical notation for Rock Shuffle 2 in 4/4 time. The top staff shows a drum pattern with four groups of eighth notes, each marked with a '3' and a bracket, indicating a triplet. The bottom staff shows a bass line with four groups of eighth notes, each marked with a '3' and a bracket, indicating a triplet.

## FUNK SHUFFLE 1

Musical notation for Funk Shuffle 1 in 4/4 time. The top staff shows a drum pattern with four groups of eighth notes, each marked with a '3' and a bracket, indicating a triplet. The bottom staff shows a bass line with four groups of eighth notes, each marked with a '3' and a bracket, indicating a triplet.

## FUNK SHUFFLE 2

Musical notation for Funk Shuffle 2 in 4/4 time. The top staff shows a drum pattern with four groups of eighth notes, each marked with a '3' and a bracket, indicating a triplet. The bottom staff shows a bass line with four groups of eighth notes, each marked with a '3' and a bracket, indicating a triplet.

# Funk

## FUNK '70 1

Musical notation for Funk '70 1, featuring a 4/4 time signature and a bass line with eighth notes and a dotted quarter note.

## FUNK '70 2

Musical notation for Funk '70 2, featuring a 4/4 time signature and a bass line with eighth notes and a dotted quarter note, with accents on the eighth notes.

## FUNK '70 3

Musical notation for Funk '70 3, featuring a 4/4 time signature and a bass line with eighth notes and a dotted quarter note, with a grace note on the eighth note.

## FUNK BLUES 1

Musical notation for Funk Blues 1, featuring a 4/4 time signature and a bass line with eighth notes and a dotted quarter note.

## FUNK BLUES 2

Musical notation for Funk Blues 2, featuring a 4/4 time signature and a bass line with eighth notes and a dotted quarter note, with a grace note on the eighth note.

## FUNK ROCK 1

Musical notation for Funk Rock 1, featuring a 4/4 time signature and a bass line with eighth notes and a dotted quarter note, with a grace note on the eighth note.

## FUNK ROCK 2

Musical notation for Funk Rock 2, featuring a 4/4 time signature and a bass line with eighth notes and a dotted quarter note, with a grace note on the eighth note.

## FUNK JAZZ 1

Musical notation for Funk Jazz 1, featuring a 4/4 time signature and a bass line with eighth notes and a dotted quarter note, with a grace note on the eighth note.

## FUNK JAZZ 2

Musical notation for Funk Jazz 2, featuring a 4/4 time signature and a bass line with eighth notes and a dotted quarter note, with a grace note on the eighth note.

# Latin

## RHUMBA

Musical notation for Rumba in 4/4 time. The notation consists of a single staff with a treble clef and a 4/4 time signature. The rhythm is characterized by a steady quarter-note bass line and a melody of eighth notes with accents. The notes are: G4, A4, B4, C5, B4, A4, G4, F4, E4, D4, C4.

## SAMBA

Musical notation for Samba in 2/4 time. The notation consists of a single staff with a treble clef and a 2/4 time signature. The rhythm is characterized by a steady quarter-note bass line and a melody of eighth notes with accents. The notes are: G4, A4, B4, C5, B4, A4, G4, F4, E4, D4, C4.

## TANGO

Musical notation for Tango in 4/4 time. The notation consists of a single staff with a treble clef and a 4/4 time signature. The rhythm is characterized by a steady quarter-note bass line and a melody of eighth notes with accents. The notes are: G4, A4, B4, C5, B4, A4, G4, F4, E4, D4, C4.

## BEGUINE

Musical notation for Beguine in 4/4 time. The notation consists of a single staff with a treble clef and a 4/4 time signature. The rhythm is characterized by a steady quarter-note bass line and a melody of eighth notes with accents. The notes are: G4, A4, B4, C5, B4, A4, G4, F4, E4, D4, C4.

## CALYPSO

Musical notation for Calypso in 4/4 time. The notation consists of a single staff with a treble clef and a 4/4 time signature. The rhythm is characterized by a steady quarter-note bass line and a melody of eighth notes with accents. The notes are: G4, A4, B4, C5, B4, A4, G4, F4, E4, D4, C4.

## MAMBO

Musical notation for Mambo in 4/4 time. The notation consists of a single staff with a treble clef and a 4/4 time signature. The rhythm is characterized by a steady quarter-note bass line and a melody of eighth notes with accents. The notes are: G4, A4, B4, C5, B4, A4, G4, F4, E4, D4, C4.

## CHA CHA CHA

Musical notation for Cha Cha Cha in 4/4 time. The notation consists of a single staff with a treble clef and a 4/4 time signature. The rhythm is characterized by a steady quarter-note bass line and a melody of eighth notes with accents. The notes are: G4, A4, B4, C5, B4, A4, G4, F4, E4, D4, C4.

## MERENGUE

Musical notation for Merengue in 4/4 time. The notation consists of a single staff with a treble clef and a 4/4 time signature. The rhythm is characterized by a steady quarter-note bass line and a melody of eighth notes with accents. The notes are: G4, A4, B4, C5, B4, A4, G4, F4, E4, D4, C4.

## BOSSANOVA

Musical notation for Bossanova in 4/4 time. The notation consists of a single staff with a treble clef and a 4/4 time signature. The rhythm is characterized by a steady quarter-note bass line and a melody of eighth notes with accents. The notes are: G4, A4, B4, C5, B4, A4, G4, F4, E4, D4, C4.

# Afro reggae

## AFROCUBAN

Musical notation for AFROCUBAN style, featuring a bass line with eighth notes and a snare line with eighth notes and rests.

## NANIGO

Musical notation for NANIGO style, featuring a bass line with eighth notes and a snare line with eighth notes and rests.

## AFRO ROCK

Musical notation for AFRO ROCK style, featuring a bass line with eighth notes and a snare line with eighth notes and rests.

## FAST REGGAE

Musical notation for FAST REGGAE style, featuring a bass line with eighth notes and a snare line with eighth notes and rests.

## SLOW REGGAE 1

Musical notation for SLOW REGGAE 1 style, featuring a bass line with eighth notes and a snare line with eighth notes and rests.

## SLOW REGGAE 2

Musical notation for SLOW REGGAE 2 style, featuring a bass line with eighth notes and a snare line with eighth notes and rests.

## SKA

Musical notation for SKA style, featuring a bass line with eighth notes and a snare line with eighth notes and rests.

## SAMBA REGGAE

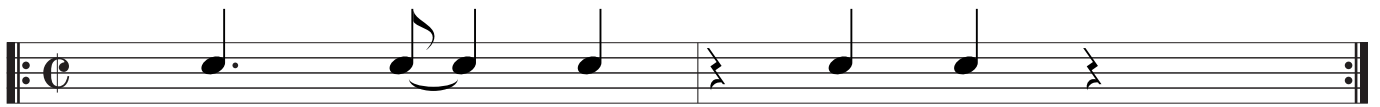
Musical notation for SAMBA REGGAE style, featuring a bass line with eighth notes and a snare line with eighth notes and rests.

## FUNKY REGGAE

Musical notation for FUNKY REGGAE style, featuring a bass line with eighth notes and a snare line with eighth notes and rests.

# Afro-Cuban

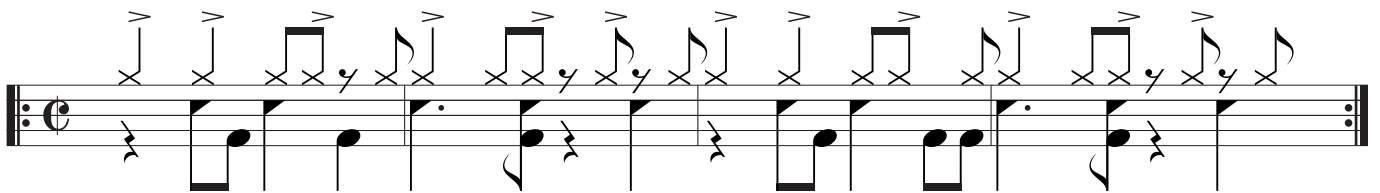
SON CLAVE



RUMBA CLAVE



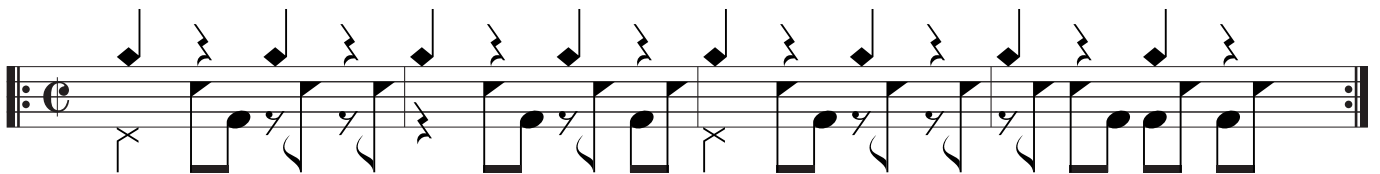
CASCARA SON



CASCARA RUMBA



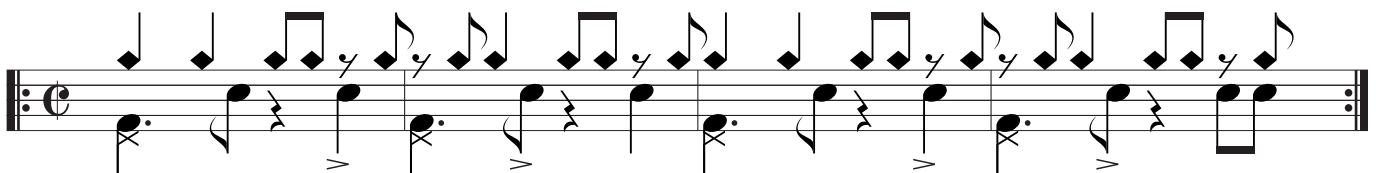
SONGO



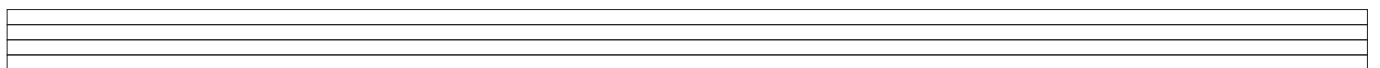
GUAGUANCO



MOZAMBIQUE



CHA CHA







# Jeff Porcaro grooves

## CHILD' ANTHEM

Musical notation for 'CHILD' ANTHEM' in 4/4 time. The top staff shows a drum pattern with triplets of eighth notes and quarter notes, with 'x' marks indicating hits. The bottom staff shows the bass line with eighth and quarter notes.

## GIRL GOODBYE

Musical notation for 'GIRL GOODBYE' in 4/4 time. The top staff shows a drum pattern with eighth notes and quarter notes, with 'x' marks indicating hits. The bottom staff shows the bass line with eighth and quarter notes.

## HOLD THE LINE

Musical notation for 'HOLD THE LINE' in 4/4 time. The top staff shows a drum pattern with triplets of eighth notes and quarter notes, with 'x' marks indicating hits. The bottom staff shows the bass line with eighth and quarter notes.

## ROSANNA

Musical notation for 'ROSANNA' in 4/4 time. The top staff shows a drum pattern with sixteenth notes and eighth notes, with 'x' marks indicating hits. The bottom staff shows the bass line with eighth and quarter notes.

## AFRICA

Musical notation for 'AFRICA' in 4/4 time. The top staff shows a drum pattern with eighth notes and quarter notes, with 'x' marks indicating hits. The bottom staff shows the bass line with eighth and quarter notes.

## TILL THE END

Musical notation for 'TILL THE END' in 4/4 time. The top staff shows a drum pattern with eighth notes and quarter notes, with 'x' marks indicating hits. The bottom staff shows the bass line with eighth and quarter notes.

## I'LL BE OVER YOU

Musical notation for 'I'LL BE OVER YOU' in 4/4 time. The top staff shows a drum pattern with eighth notes and quarter notes, with 'x' marks indicating hits. The bottom staff shows the bass line with eighth and quarter notes.

## COULD THIS BE LOVE

Musical notation for 'COULD THIS BE LOVE' in 4/4 time. The top staff shows a drum pattern with eighth notes and quarter notes, with 'x' marks indicating hits. The bottom staff shows the bass line with eighth and quarter notes.

# John Bonham grooves

## GOOD TIMES BAD TIMES

Musical notation for 'Good Times Bad Times' in 4/4 time. The notation consists of two staves. The top staff shows a drum pattern with 'x' marks indicating cymbal hits. The bottom staff shows the bass drum and snare drum patterns.

## I CAN'T QUIT YOU BABY

Musical notation for 'I Can't Quit You Baby' in 12/8 time. The notation consists of two staves. The top staff shows a drum pattern with 'x' marks and triplets. The bottom staff shows the bass drum and snare drum patterns, including a triplet of eighth notes.

## HOW MANY MORE TIMES

Musical notation for 'How Many More Times' in 4/4 time. The notation consists of two staves. The top staff shows a drum pattern with 'x' marks. The bottom staff shows the bass drum and snare drum patterns, including triplets of eighth notes.

## SINCE I'VE BEEN LOVING YOU

Musical notation for 'Since I've Been Loving You' in 12/8 time. The notation consists of two staves. The top staff shows a drum pattern with 'x' marks. The bottom staff shows the bass drum and snare drum patterns.

## BLACK DOG

Musical notation for 'Black Dog' in 4/4 time. The notation consists of two staves. The top staff shows a drum pattern with 'x' marks. The bottom staff shows the bass drum and snare drum patterns.

## STAIRWAY TO HEAVEN

Musical notation for 'Stairway to Heaven' in 4/4 time. The notation consists of two staves. The top staff shows a drum pattern with 'x' marks. The bottom staff shows the bass drum and snare drum patterns.

## WHEN THE LEVEE BREAKS

Musical notation for 'When the Levee Breaks' in 4/4 time. The notation consists of two staves. The top staff shows a drum pattern with 'x' marks. The bottom staff shows the bass drum and snare drum patterns, including triplets of eighth notes.

## SOUTH BOUND SAUREZ

Musical notation for 'South Bound Saurez' in 4/4 time. The notation consists of two staves. The top staff shows a drum pattern with 'x' marks. The bottom staff shows the bass drum and snare drum patterns.

# Phil Collins grooves

## THE LAMB LIES DOWN ON BROADWAY

Musical notation for 'The Lamb Lies Down on Broadway' in 4/4 time. The top staff shows a drum pattern with accents (>) and crosses (x) on the snare and tom-toms. The bottom staff shows the bass line with notes and rests.

## FOLLOW YOU, FOLLOW ME

Musical notation for 'Follow You, Follow Me' in 4/4 time. The top staff shows a drum pattern with accents (>) and crosses (x) on the snare and tom-toms. The bottom staff shows the bass line with notes and rests.

## DOWN AND OUT

Musical notation for 'Down and Out' in 5/4 time. The top staff shows a drum pattern with accents (>) and crosses (x) on the snare and tom-toms. The bottom staff shows the bass line with notes and rests.

## INVISIBLE TOUCH

Musical notation for 'Invisible Touch' in 4/4 time. The top staff shows a drum pattern with accents (>) and crosses (x) on the snare and tom-toms. The bottom staff shows the bass line with notes and rests.

## JESUS HE KNOWS ME

Musical notation for 'Jesus He Knows Me' in 4/4 time. The top staff shows a drum pattern with accents (>) and crosses (x) on the snare and tom-toms. The bottom staff shows the bass line with notes and rests.

## IT DON'T MATTER TO ME

Musical notation for 'It Don't Matter to Me' in 4/4 time. The top staff shows a drum pattern with accents (>) and crosses (x) on the snare and tom-toms. The bottom staff shows the bass line with notes and rests.

## SUSSUDIO

Musical notation for 'Susudio' in 4/4 time. The top staff shows a drum pattern with accents (>) and crosses (x) on the snare and tom-toms. The bottom staff shows the bass line with notes and rests.

## EASY LOVER

Musical notation for 'Easy Lover' in 4/4 time. The top staff shows a drum pattern with accents (>) and crosses (x) on the snare and tom-toms. The bottom staff shows the bass line with notes and rests.

# Steve Gadd grooves

## 50 WAYS TO LEAVE YOUR LOVER

Musical notation for '50 WAYS TO LEAVE YOUR LOVER' in 4/4 time. The notation features a series of eighth notes with accents (>) and 'x' marks above them, indicating specific drum patterns. The piece concludes with a double bar line.

## LATE IN THE EVENING

Musical notation for 'LATE IN THE EVENING' in 4/4 time. The notation features a series of eighth notes with accents (>) and 'x' marks above them, indicating specific drum patterns. The piece concludes with a double bar line.

## LENORE

Musical notation for 'LENORE' in 4/4 time. The notation features a series of eighth notes with accents (>) and 'x' marks above them, indicating specific drum patterns. The piece concludes with a double bar line.

## SICILY

Musical notation for 'SICILY' in 4/4 time. The notation features a series of eighth notes with accents (>) and 'x' marks above them, indicating specific drum patterns. The piece concludes with a double bar line.

## I LOVE WASTIN' TIME WITH YOU

Musical notation for 'I LOVE WASTIN' TIME WITH YOU' in 4/4 time. The notation features a series of eighth notes with accents (>) and 'x' marks above them, indicating specific drum patterns. The piece concludes with a double bar line.

## I'VE GOT THE MELODY

Musical notation for 'I'VE GOT THE MELODY' in 4/4 time. The notation features a series of eighth notes with accents (>) and 'x' marks above them, indicating specific drum patterns. The piece concludes with a double bar line.

## DIRTY OLD MAN

Musical notation for 'DIRTY OLD MAN' in 4/4 time. The notation features a series of eighth notes with accents (>) and 'x' marks above them, indicating specific drum patterns. The piece concludes with a double bar line.

## HOP SCOTCH

Musical notation for 'HOP SCOTCH' in 4/4 time. The notation features a series of eighth notes with accents (>) and 'x' marks above them, indicating specific drum patterns. The piece concludes with a double bar line.